

Support and reinforce soft tissue *and*
minimize soft tissue attachments (STAs)

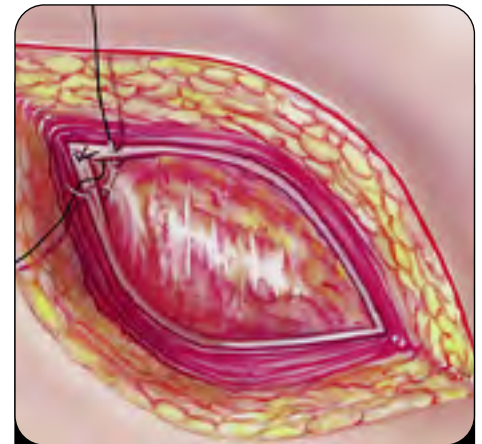
**Don't try this with
anything but SurgiWrap®.**



Through a trocar



Around an ostomy



Laparotomy closure

**The first and only bioresorbable protective sheet
indicated for open or laparoscopic surgery**

Cleared by the FDA

- Safe and effective in all soft tissues of pelvic and abdominal cavities

 **SurgiWrap** MAST

Bioresorbable Protective Sheet

It's in your hands.

Study documents the safety and efficacy of SurgiWrap® in colorectal surgery¹

Randomized, controlled pilot study of the extent and severity of STAs with 19 patients who underwent a temporary diverting loop ileostomy resulted in:

- A threefold reduction of tenacious STAs under the midline incision
- No attachments, or only localized attachments (covering less than 1/3 of the scar) in 87.5% of patients
- No patients with severe (Grade 3) attachments as seen in 100% of control patients

“...SurgiWrap® ...leads to an at least threefold reduction of tenacious soft tissue attachments to the scar resulting from the midline incision.”

It's in your hands

Placing SurgiWrap® is quick, easy and intuitive

After introduction into the sterile field, simply:



1. Cut circle in middle of SurgiWrap®
2. Pull proximal limb through hole
3. Secure to abdominal wall in normal fashion

Reference: 1. Faerden A, Reiertsen O. *The Efficacy in Minimizing Soft Tissue Attachment Using PLA Sheet™ Bioresorbable Sheets in Temporary Diverting Loop Ileostomy.* Clinical Data Series in Bioresorbable Technology. Available at www.mastbio.com



MAST Biosurgery Inc.
6749 Top Gun Street, Suite 108, San Diego, CA 92121
Phone (858) 550-8050 Fax (858) 550-8060
Visit us online at www.mastbio.com



Bioresorbable Protective Sheet

It's in your hands.